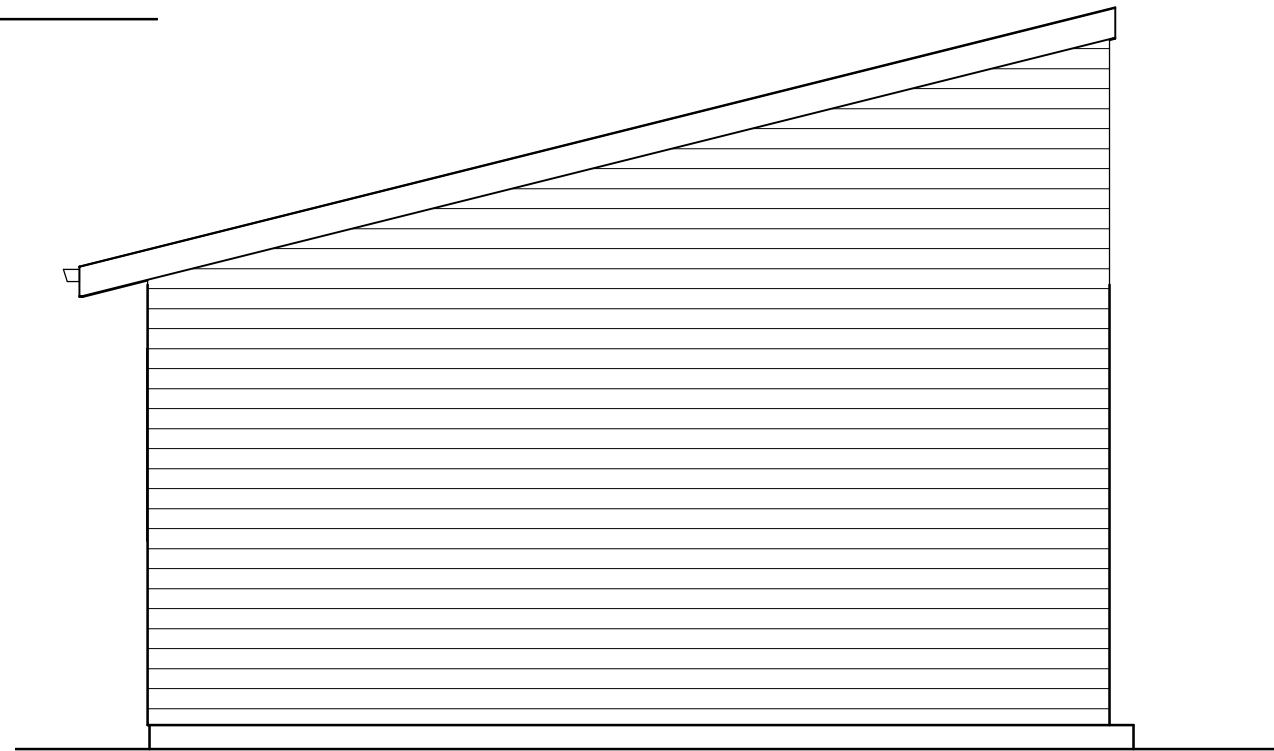


Front Elevation 1/4"=1'

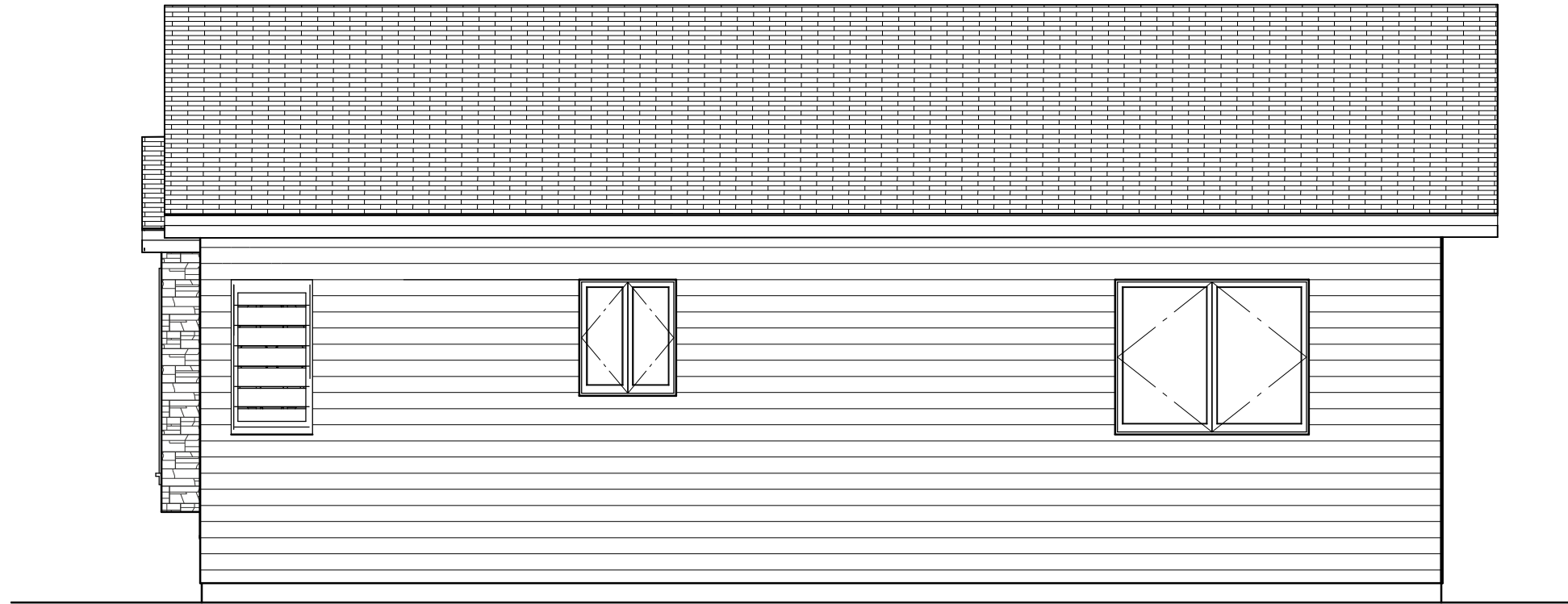


Rear Elevation 1/4"=1'

DakotaPlex
1-Bedroom RH

DakotaPlex
1-Bedroom RH

DESIGN BY:
Mike Harsma
5/4/2021



Left Elevation 1/4"=1'

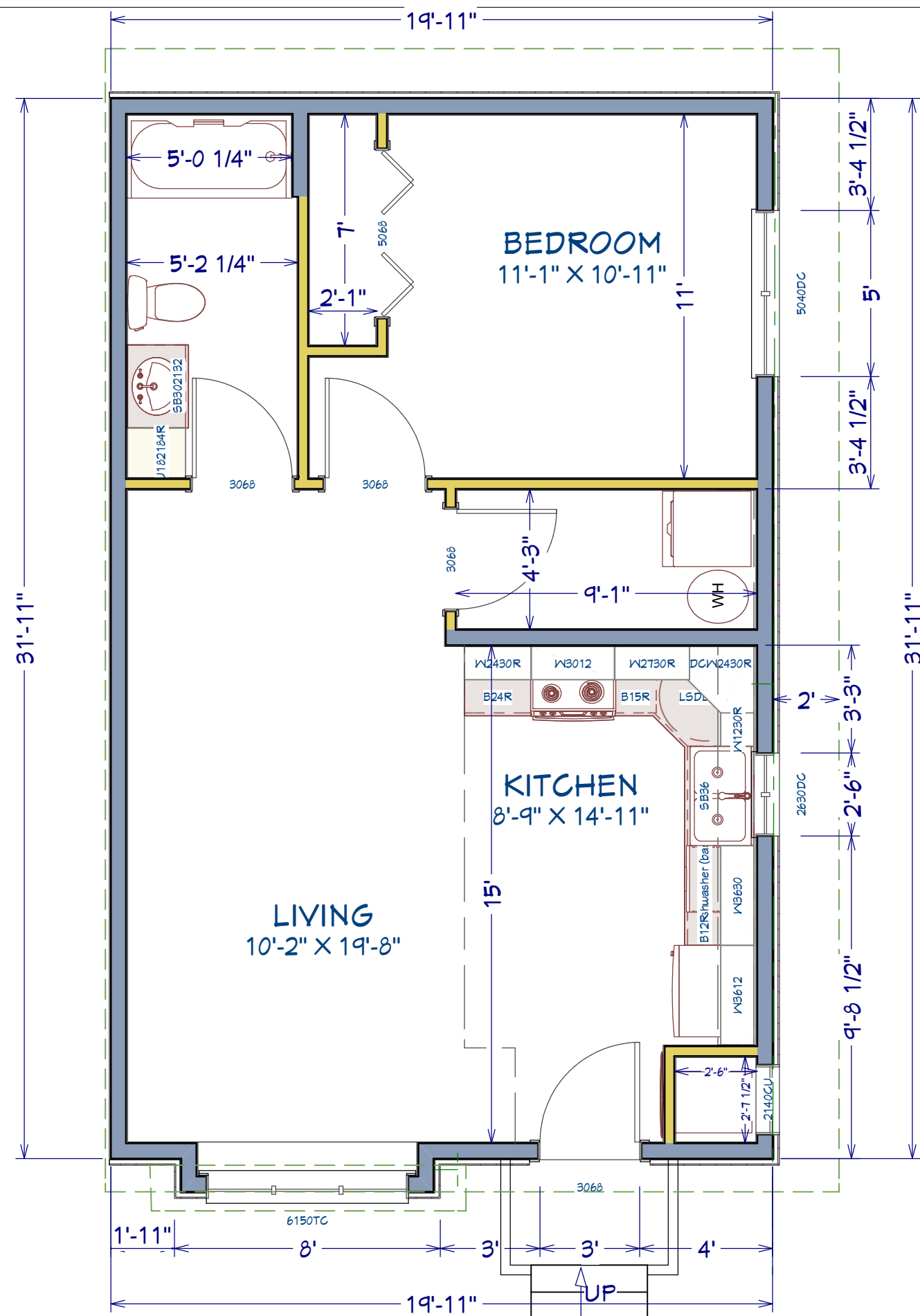
Window Schedule		
Type	R.O Size	Style
A	60"x48"	Casement
B	30"x36"	Casement
C	72"x60"	Triple Casement

Door Schedule			
Type	Size	R.O. Size	Style
A	3'-0"x6'8"	38 1/2"x82 1/2"	Ins. Steel w/ Lite
B	3'0"x6'8"	38 1/2"x82 1/2"	Wood Passage
D	5'0"x6'8"	62 1/2"x82 1/2"	Wood Bifold

DakotaPlex
1-Bedroom RH

DakotaPlex
1-Bedroom RH

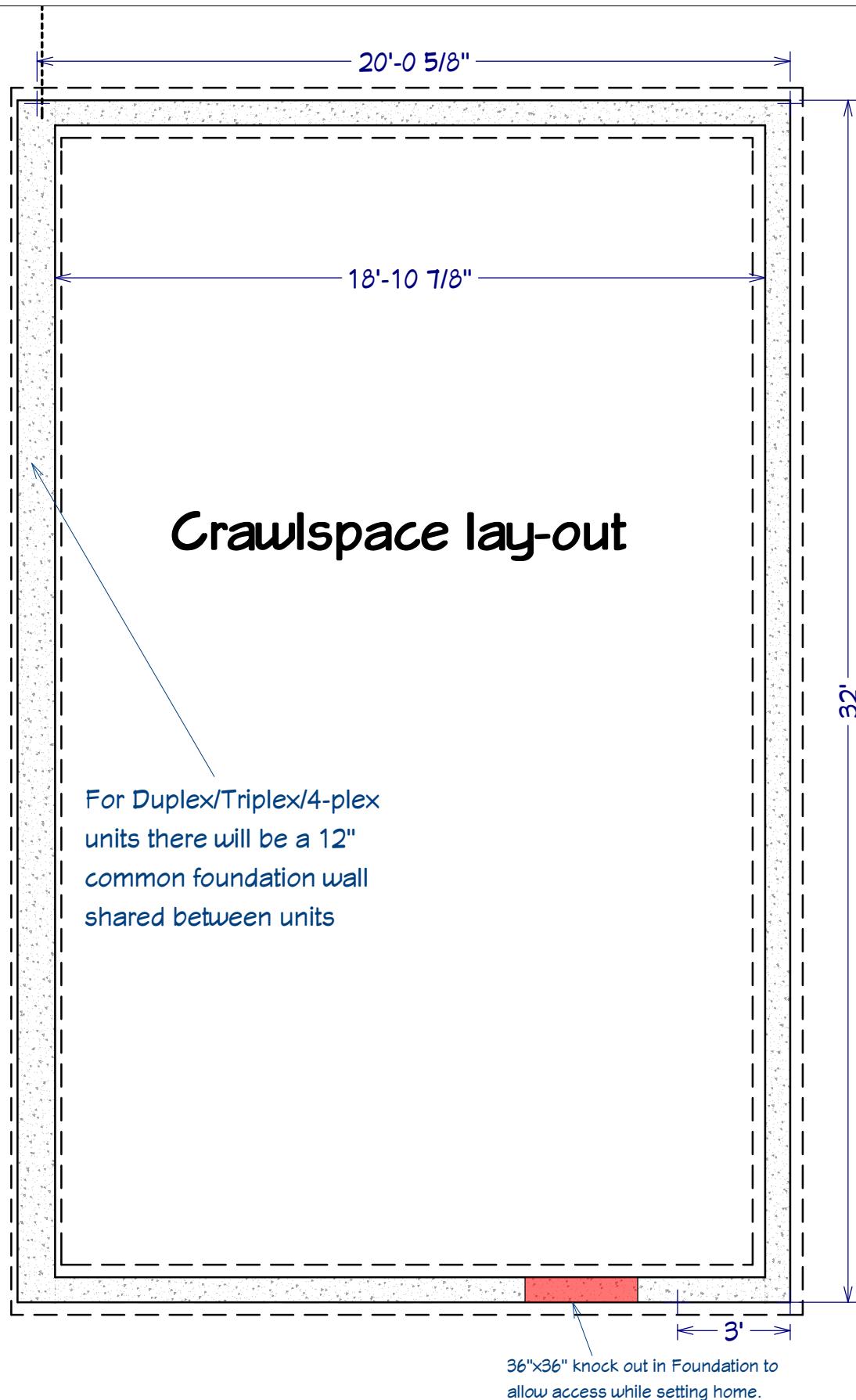
Main Floor



Dimensions are Framing Dimension. Verify surface dimension upon ordering 1/4" = 1'

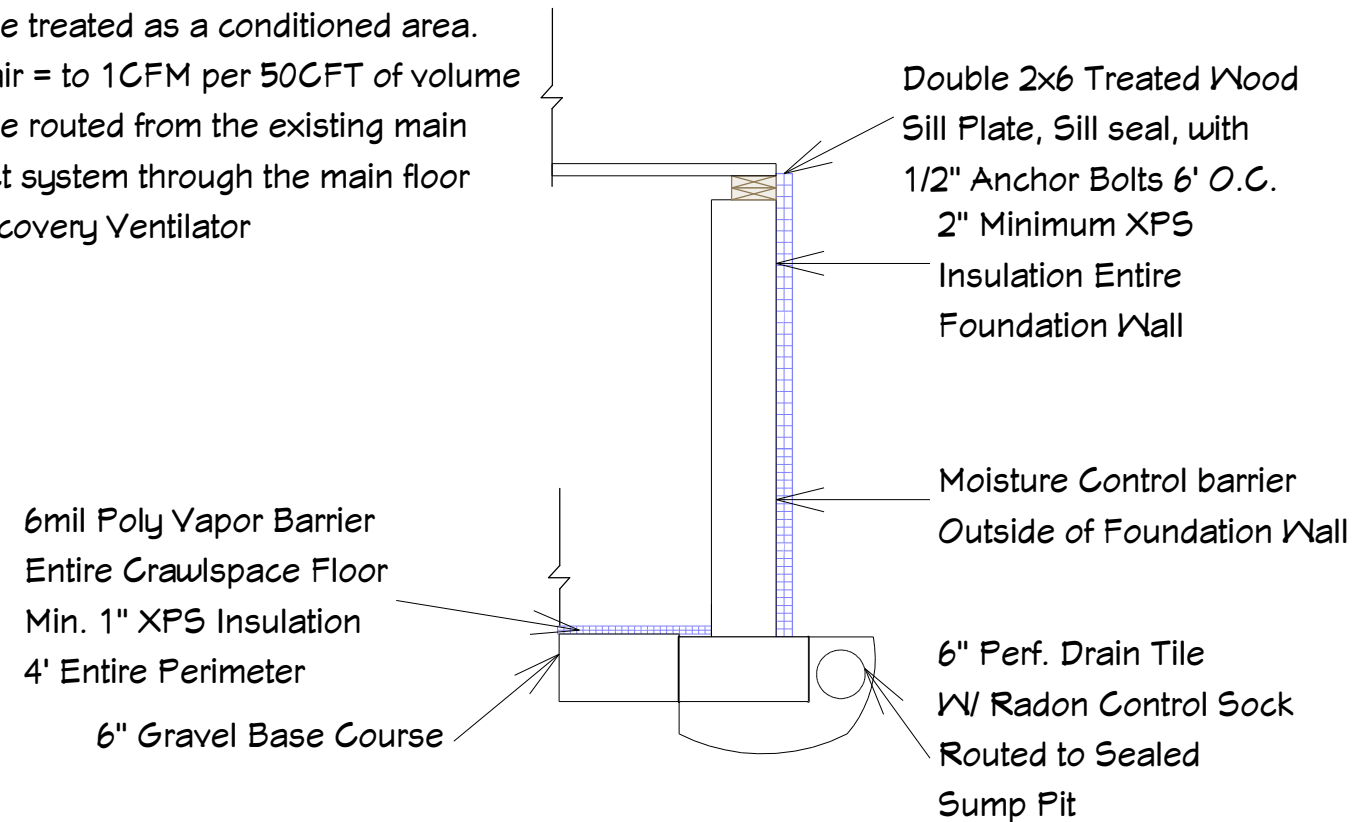
DESIGN BY:
Mike Harsma
5/4/2021

DakotaPlex
1-Bedroom RH



For Duplex/Triplex/4-plex units there will be a 12" common foundation wall shared between units

Note: Insulated and sealed crawlspaces should NOT have added ventilation but should be treated as a conditioned area. Supply air = to 1CFM per 50CFT of volume should be routed from the existing main floor duct system through the main floor Heat Recovery Ventilator



Crawlspace Wall detail

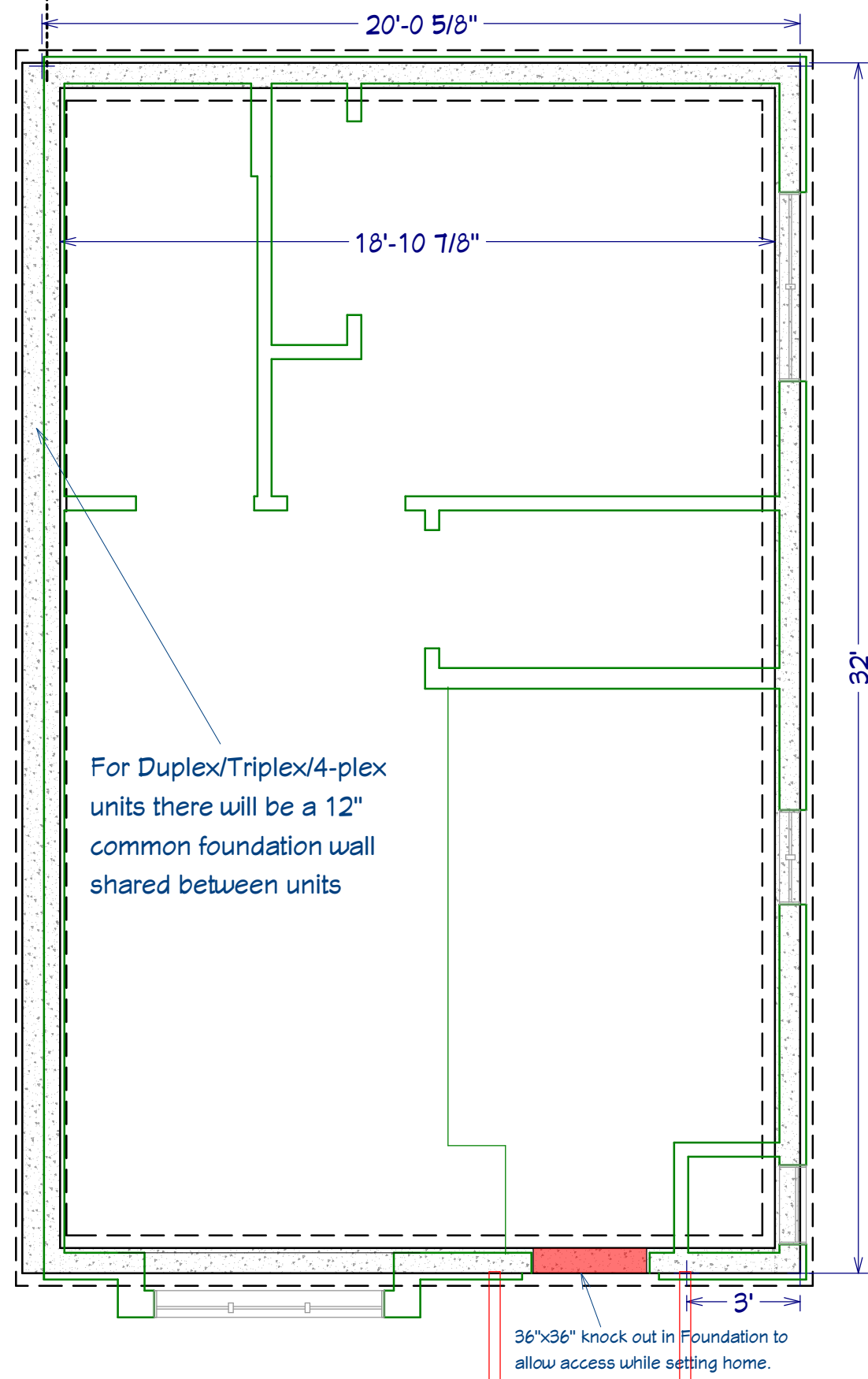
General Notes:

These Plans are meant to be a guide for foundation construction only. Because local codes and conditions vary widely across the state, owner/contractor should consult with local code officials and verify soil conditions prior to beginning work. Wall dimensions, blocking locations, reinforcement type and footing details could change substantially from location to location.

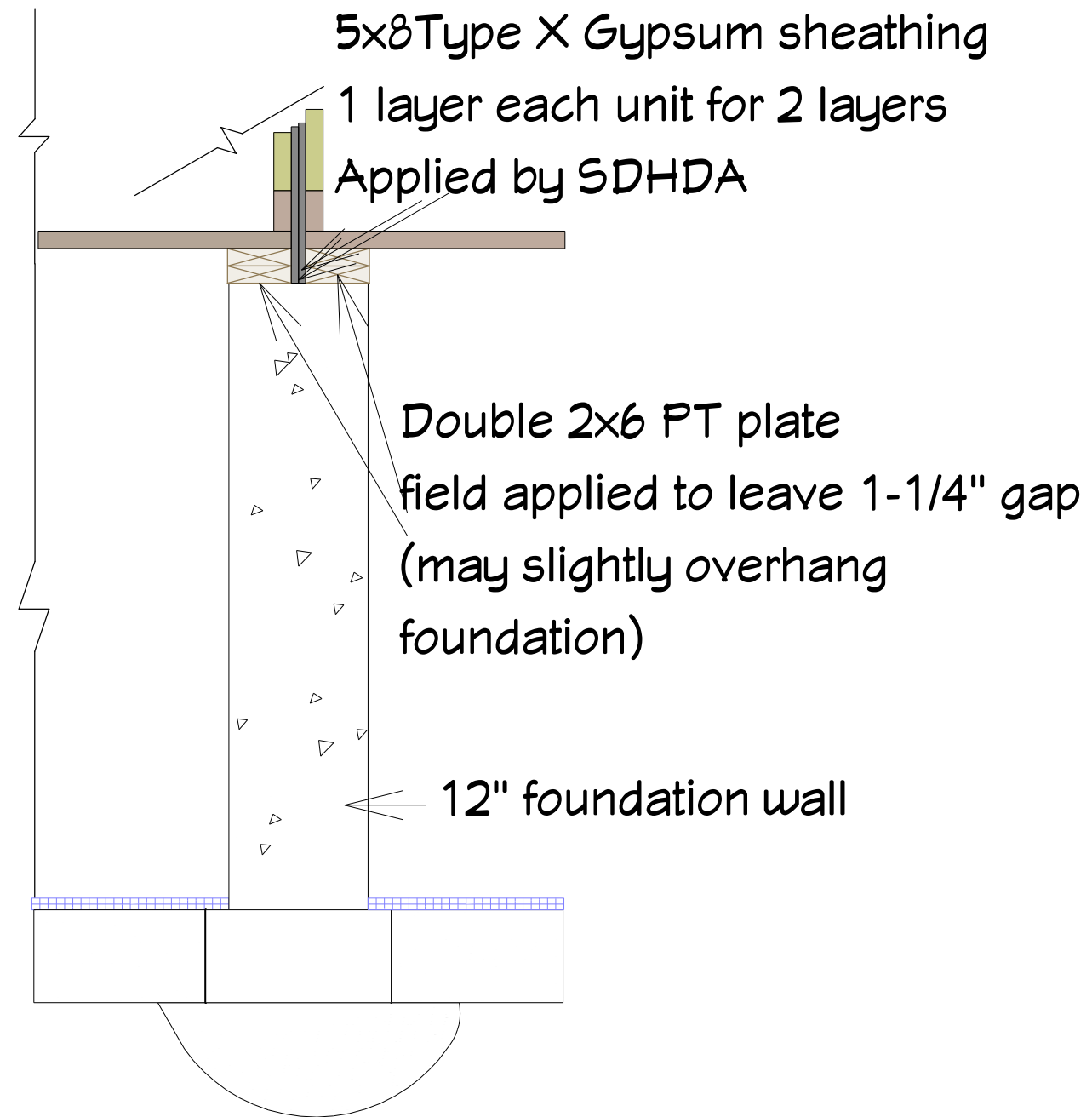
DakotaPlex
1-Bedroom RH

DakotaPlex
1-Bedroom RH

DESIGN BY:
Mike Harsma
5/4/2021



DakotaPlex 1-Bedroom RH



DakotaPlex Common Foundation Wall

General Notes:

These Plans are meant to be a guide for foundation construction only. Because local codes and conditions vary widely across the state, owner/contractor should consult with local code officials and verify soil conditions prior to beginning work. Wall dimensions, blocking locations, reinforcement type and footing details could change substantially from location to location.

Note:

The DakotaPlex is designed to be placed on an insulated and sealed basement. It should be treated as a conditioned area. Supply air = to 1CFM per 50 CFT of volume should be routed to the area